

N.W. 1/4 OF N.W. 1/4
SECTION 24, T.5N., R.2W., S.L.B. & M.

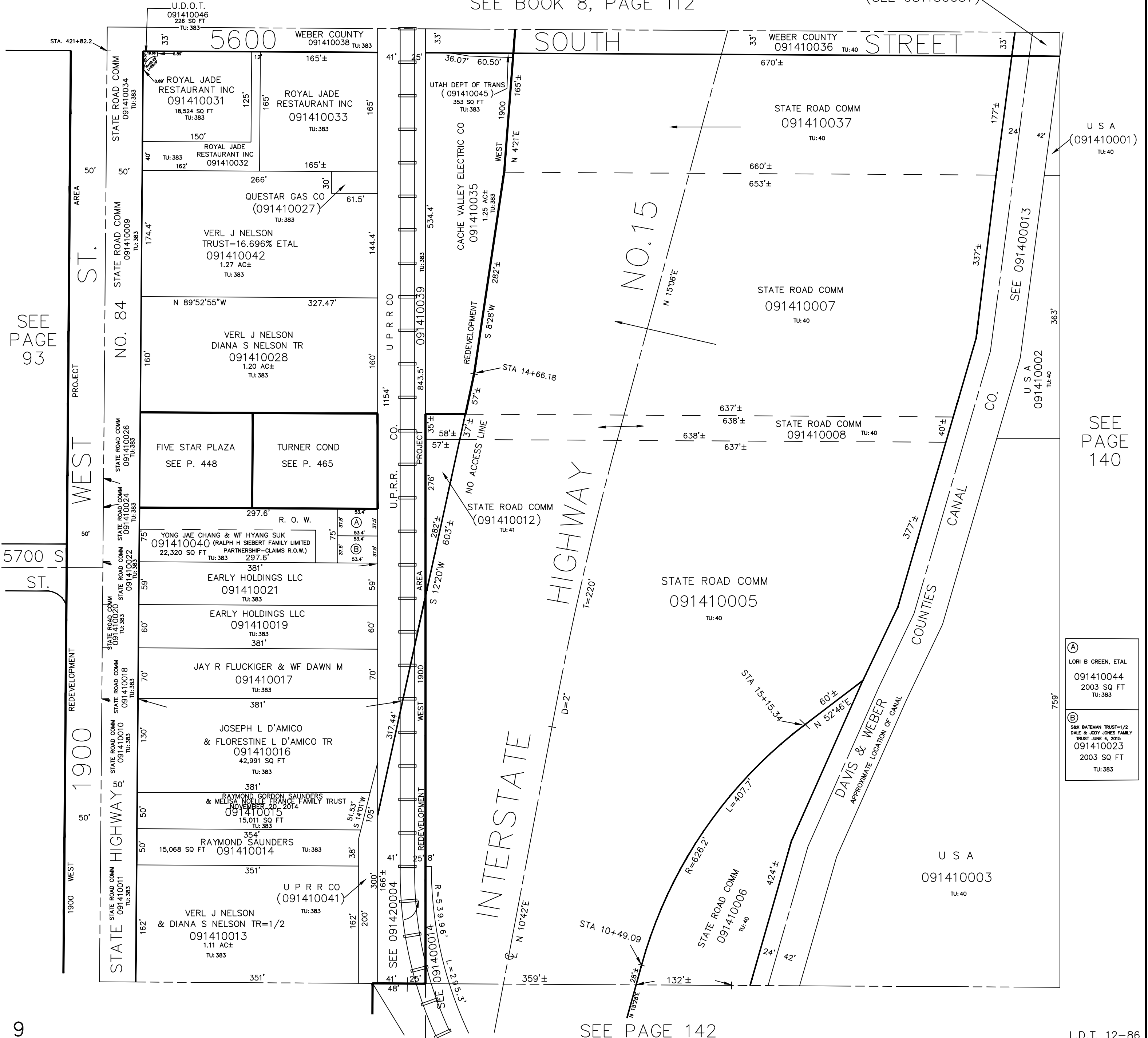
TAXING UNIT: 40, 41, 383

IN ROY CITY
SCALE 1" = 100'

NORTH DAVIS COUNTY SEWER DISTRICT
ROY WATER CONSERVANCY SUBDISTRICT
BOUNDARY FOLLOWS THE WESTERLY "NO ACCESS"
LINE OF THE INTERSTATE HIGHWAY NO. 15.

SEE BOOK 8, PAGE 112

(SEE 081130037)



SEE PAGE 93

SEE PAGE 140

SEE PAGE 142

- (A) LORI B GREEN, ETAL
091410044
2003 SQ FT
TU: 383
- (B) SAK BATEMAN TRUST-1/2
DALE & JOEY JONES FAMILY
TRUST JUNE 4, 2015
091410023
2003 SQ FT
TU: 383